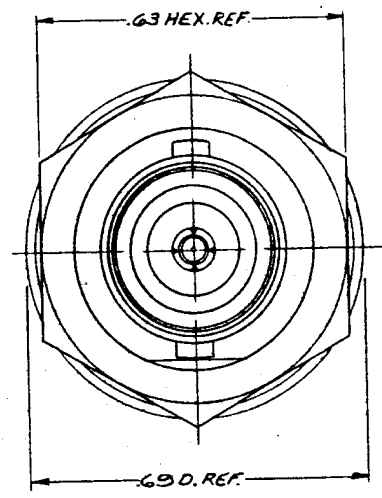
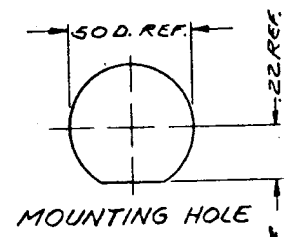
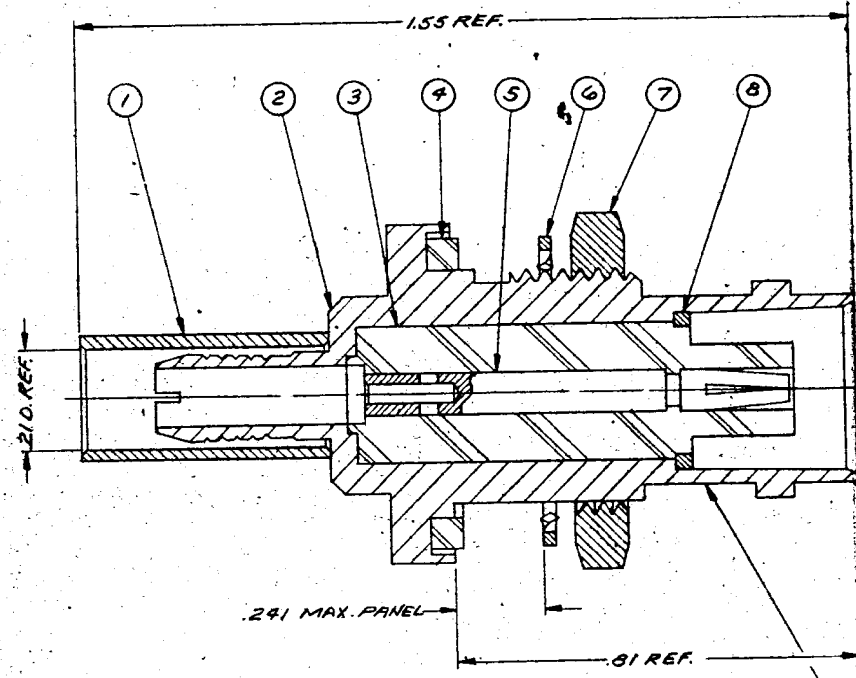


DASH NO.	DESCRIPTION	MADE FROM
----------	-------------	-----------



- NOTES:
1. FOR USE WITH RG-58, 58A, 58C, 141, 141A & 303/U CABLE.
 2. FOR CABLE TRIMMING USE KTJ-113 EKT0-166.
 3. FOR FORMING USE CRIMP DIE SIZE 01.
 4. FOR CABLING INSTRUCTIONS SEE CP-465.

STAMP: 91836 M39012/19-0013
 KC-19-207 XXXX
 DATE CODE

QTY	REQ'D	DESCRIPTION	PART NO.
9	1	CABLING INSTRUCTIONS	3-89-2M88
8	1	RETAINING RING	
7	1	HEX NUT	492A-9-MC7
6	1	LOCKWASHER	492A-12-MC7
5	1	TNC CRIMP CAPTIVE CONTACT	1-521-2-M9D
4	1	GASKET	492A-10-M99
3	1	INSULATOR	
2	1	K-GRIP BODY	
1	1	K-GRIP SLEEVE	N-59-29-2MC7
TEM	REQ'D	DESCRIPTION	PART NO.

UNLESS OTHERWISE SPECIFIED:

1. TOLERANCES: FRACTIONS & 2 PLACE DECIMALS ± .010
3 PLACE DECIMALS ± .004
T. I. R. CONCENTRICITY OF ANY 2 DIAMETERS MAY NOT EXCEED HALF THE SUM OF THEIR TOLERANCES.
2. REMOVE ALL BURRS. BREAK SHARP EDGES .005 MAX.
3. NO FILLETS PERMITTED.
4. SURFACE ROUGHNESS 63 MICROINCHES RMS MAX.
5. ALL DIMENSIONS PRIOR TO PLATING.

M39012/19-0013

REVISIONS	
ISSUE	CHANGES
0	ER 12541 J.G.L. 1 AUG 73
1	CN 12912A JL 7 NOV 73
2	CN 13277A JL 27 MAR 74
3	CN 17451C NM 23 JUN 77
4	CN 21731C M.A. 30 MAR 81
6	CN 32279A LNM 14 JUN 90

KC-19-207

USED ON:
REF:
FINISH
SPEC. KER 10004
MATL:
SPEC.

BNC
BULKHEAD JACK

DRAWN J.G.L.	DATE 1 AUG 73
APPR. LT	DATE 3 AUG 73

KINGS ELECTRONICS
40 MARBLEDALE ROAD
TUCKAHOE, N. Y. 10707

M39012/19-0013

S-D